

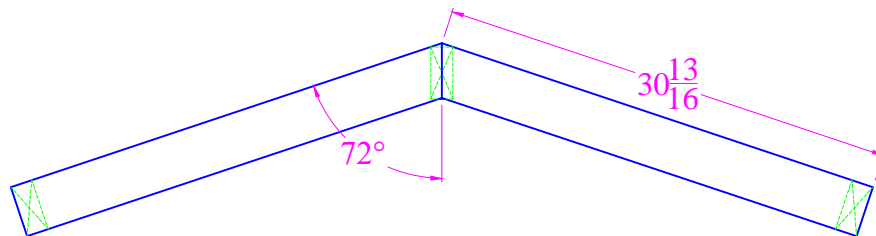
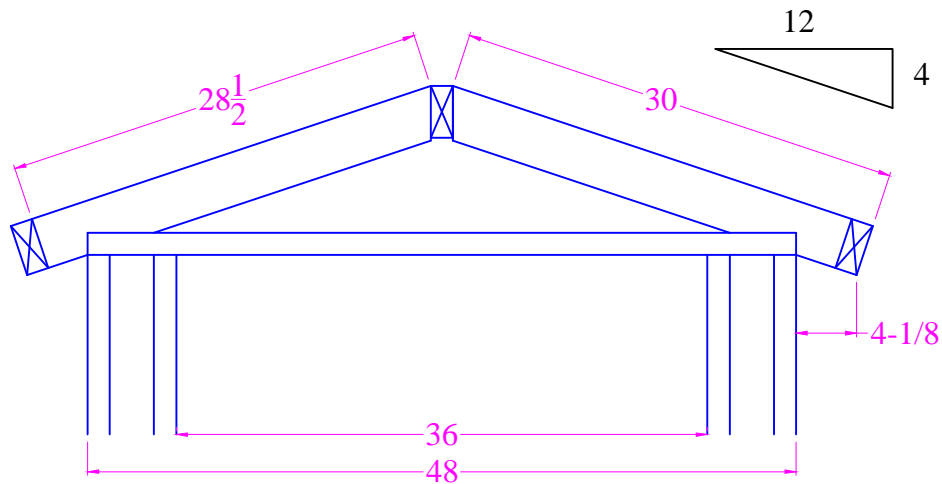
## Garden / Storage Shed

4'x8' w/Gable Roof

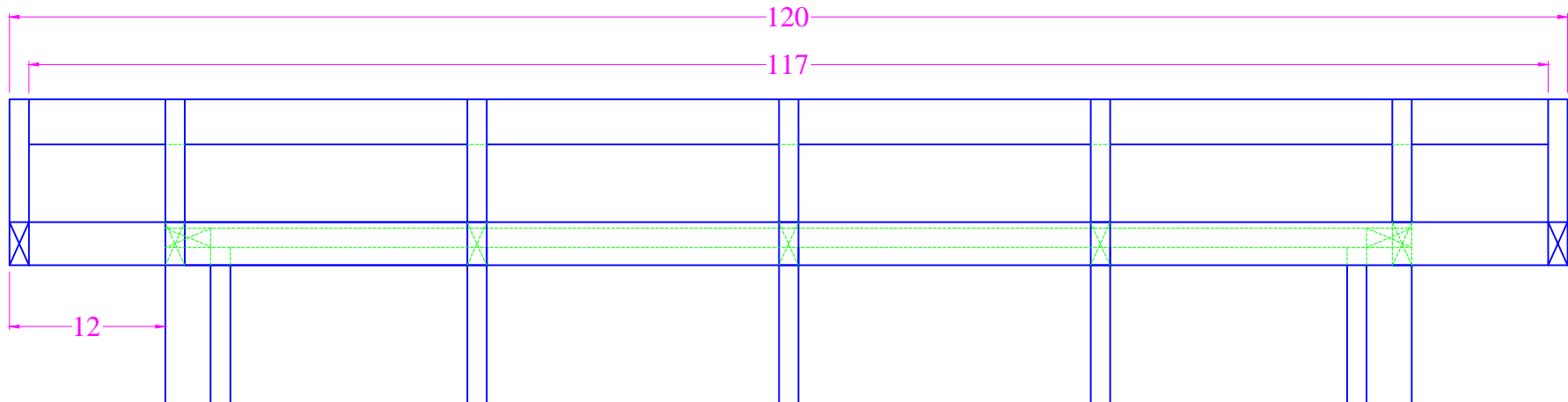
Drawn By: Dick Piersma

Date: 9-8-15

### Roof Detail



Gable End Facia Boards - 2x4 DF

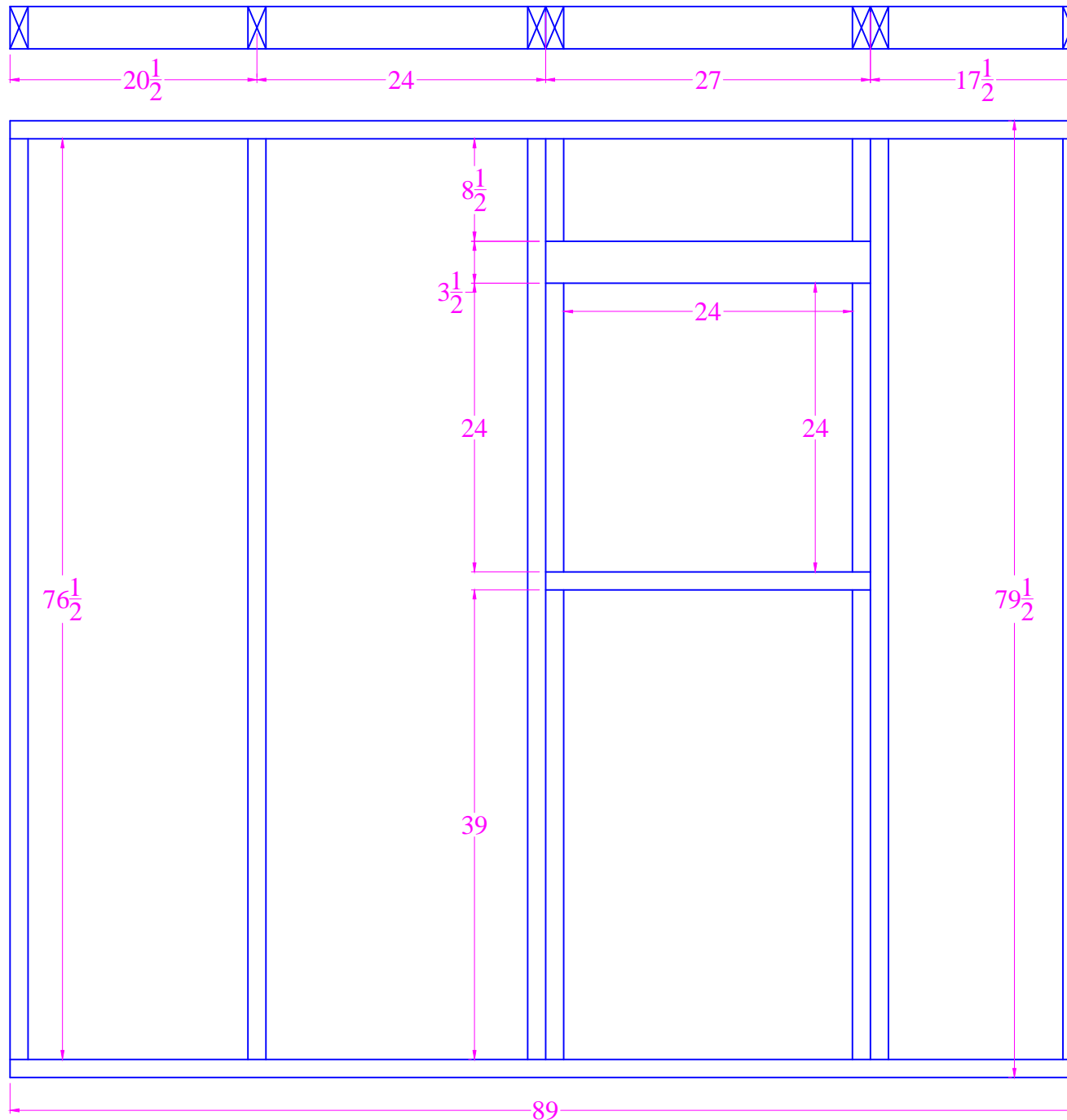


#### Notes:

1. Trusses cut from 2x4 DF
2. Use a framing square to locate the bird's mouth.
3. Make one template to mark the rest.
4. Make sure the first and last truss have no bird's mouth.  
These are the gable facia boards.
5. Ridge Board is 2x4 DF
6. Facia boards are 2x4 DF
7. Roof sheathing is  $\frac{1}{2}$ " OSB. Nail pattern is 8" centers around perimeter and 12" centers on the rest.
8. Roofing can be composition shingles or metal.

4'x8' w/Gable Roof	
Drawn By: Dick Piersma	
Date: 9-8-15	
Window Wall Framing	

## Window Wall Framing



1. Framing cut from 2x4 DF.
2. Header over window is 4x4 DF.
3. This wall fits between the end walls.
4. Fasten using 16d sinkers or 3" plated deck screws.
5. Install window before siding.
6. Attach siding once all walls are in place. Nail/screw pattern = 8" center around perimeter; 12" center everywhere else.

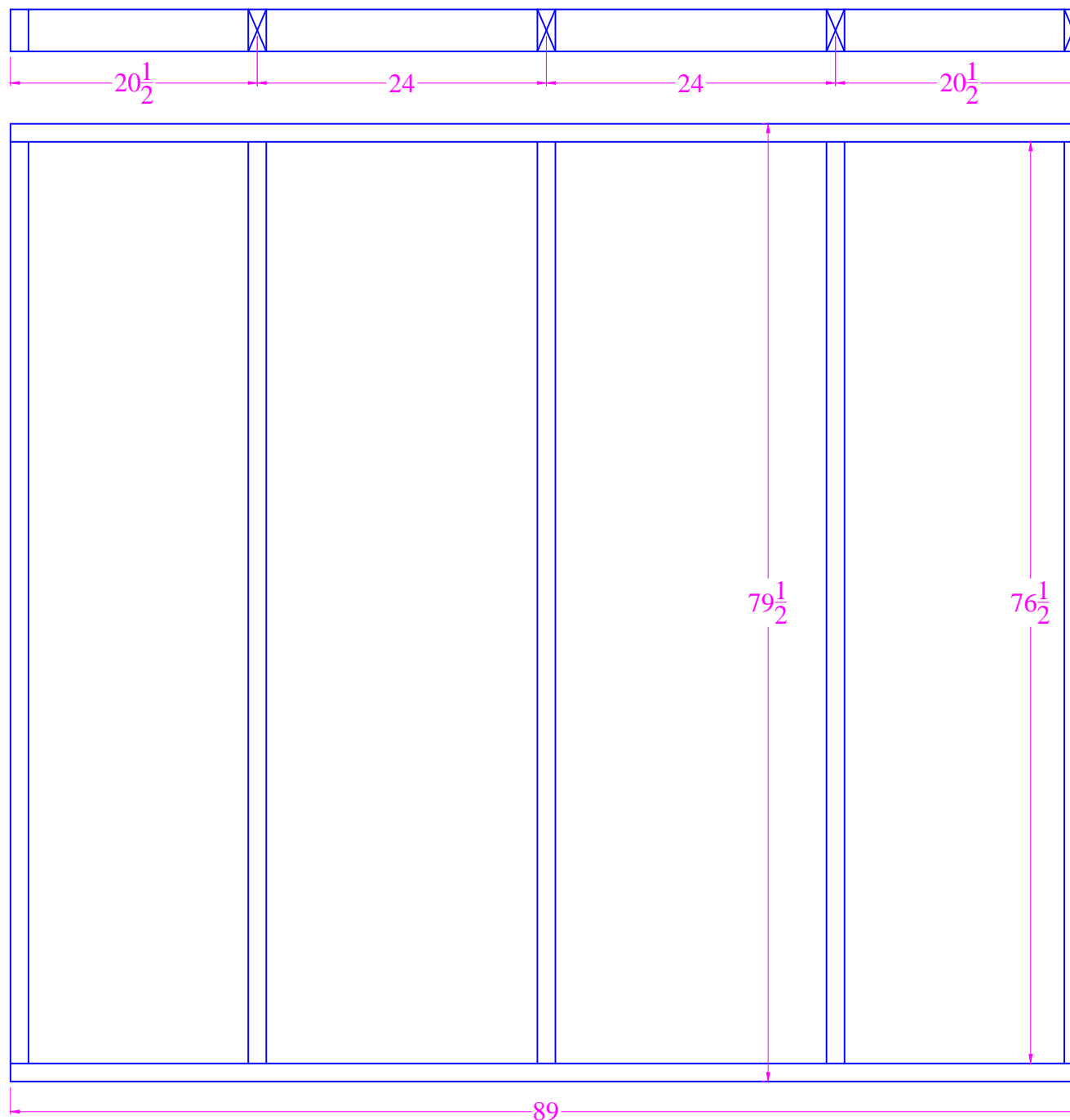
1. Framing cut from 2x4 DF.
2. Header over window is 4x4 DF.
3. This wall fits between the end walls.
4. Fasten using 16d sinkers or 3" plated deck screws.
5. Install window before siding.
6. Attach siding once all walls are in place. Nail/screw pattern = 8" center around perimeter; 12" center everywhere else.

**Garden / Storage Shed**

4'x8' w/Gable Roof

Drawn By: Dick Piersma

Date: 9-8-15

**Side Wall Framing**Notes:

1. Framing cut from 2x4 DF
2. This wall fits between the end walls.
3. Fasten using 16d sinkers or 3" plated deck screws.
4. Attach siding once all walls are in place. Nail/screw pattern = 8" center around perimeter; 12" center everywhere else.

**Garden / Storage Shed**

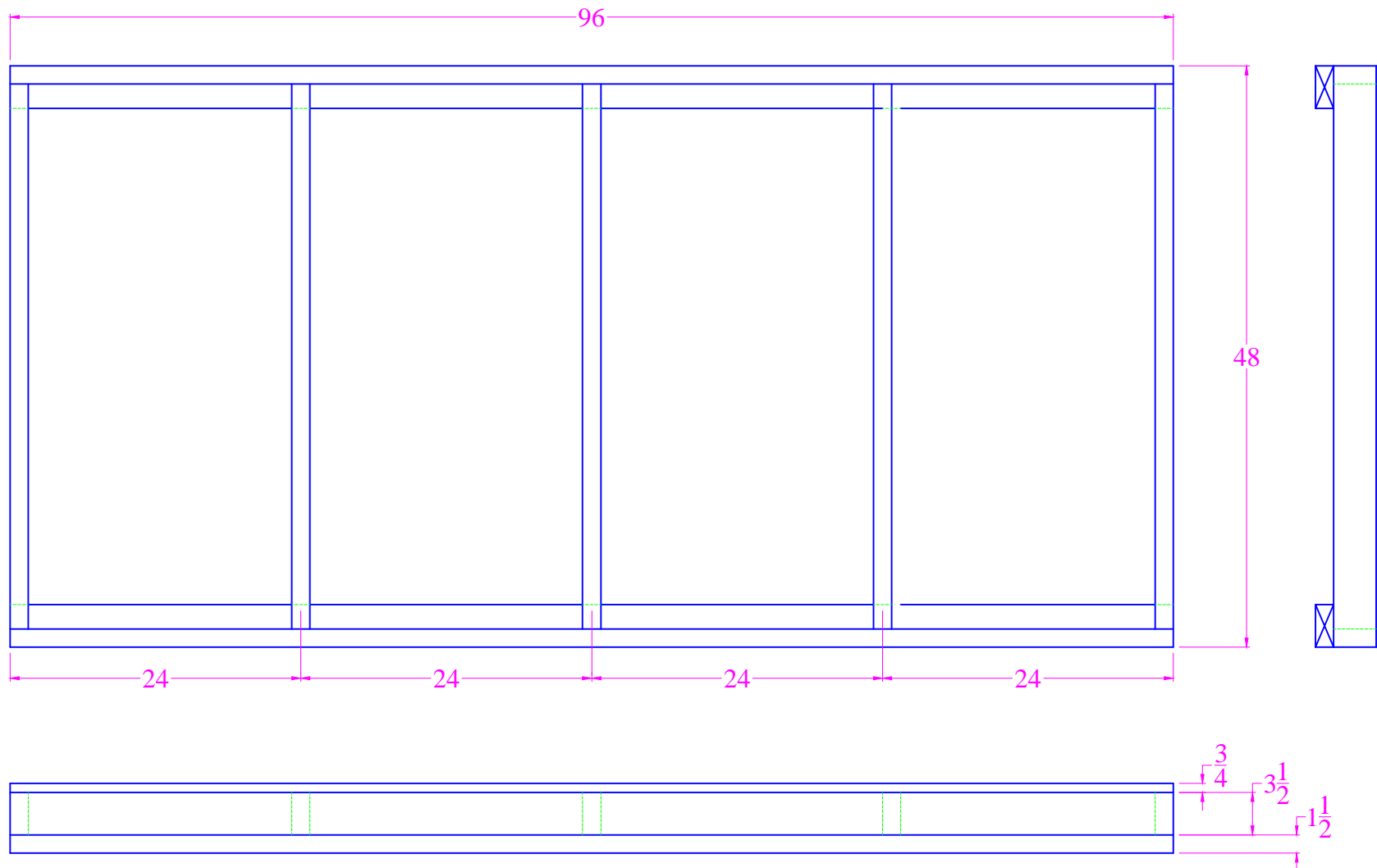
4'x8' w/Gable Roof

Drawn By: Dick Piersma

Date: 9-8-15

**Floor Detail**Notes:

1. Floor framing is 2x4 DF.
2. Fasten using 16d sinkers or 3" plated deck screws.
3. Floor sheeting is  $\frac{3}{4}$ " Exterior Grade Plywood.
4. Nail/Screw pattern is 8" centers around perimeter and 12" centers on the rest.
5. Skids are 2x4 Pressure Treated (PT) DF.



## Garden / Storage Shed

4'x8' w/Gable Roof

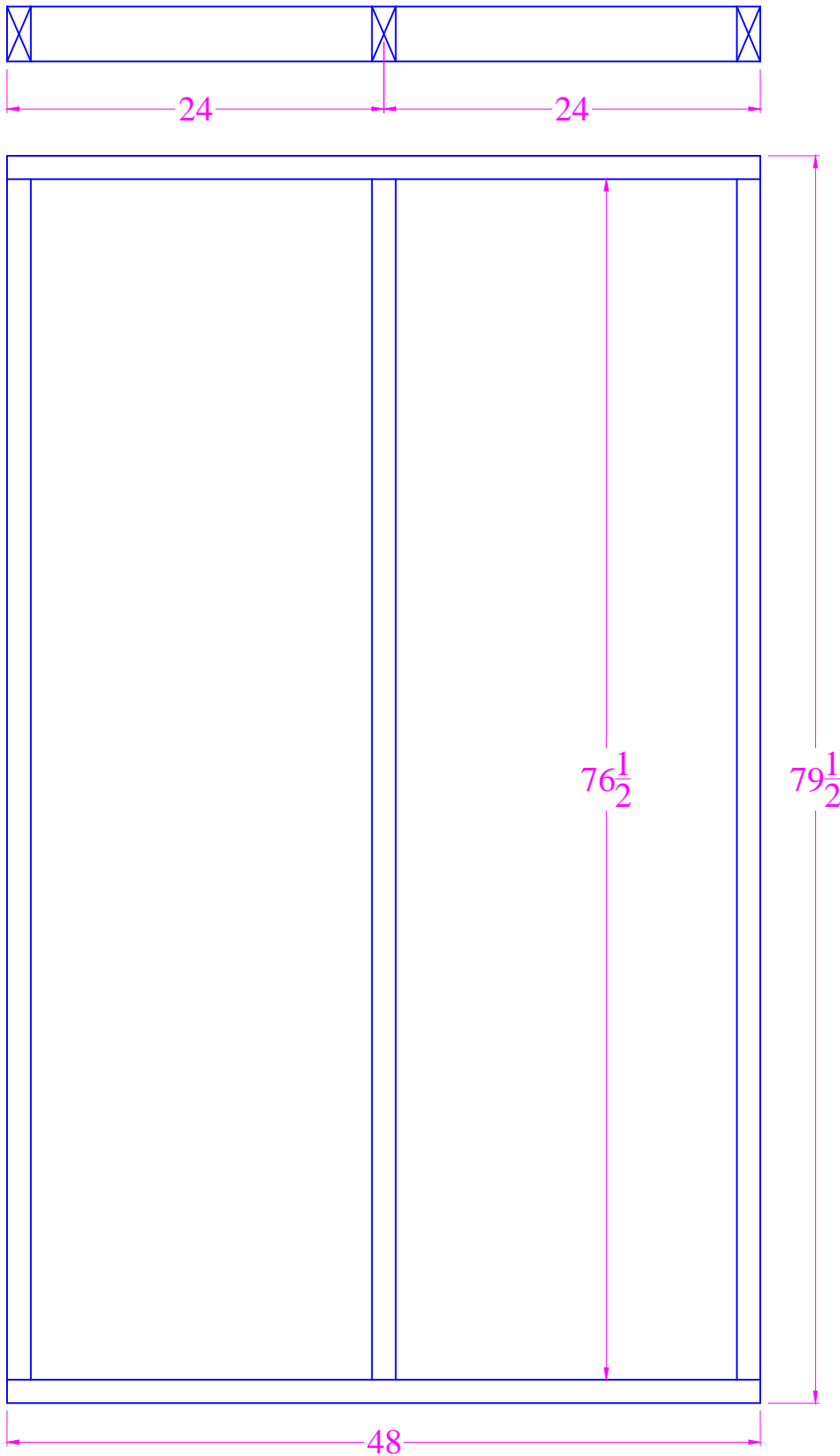
Drawn By: Dick Piersma

Date: 9-8-15

End Wall

### Notes:

1. Wall framing is 2x4 DF.
2. Fasten using 16d sinkers or 3" plated deck screws.



## Garden / Storage Shed

4'x8' w/Gable Roof

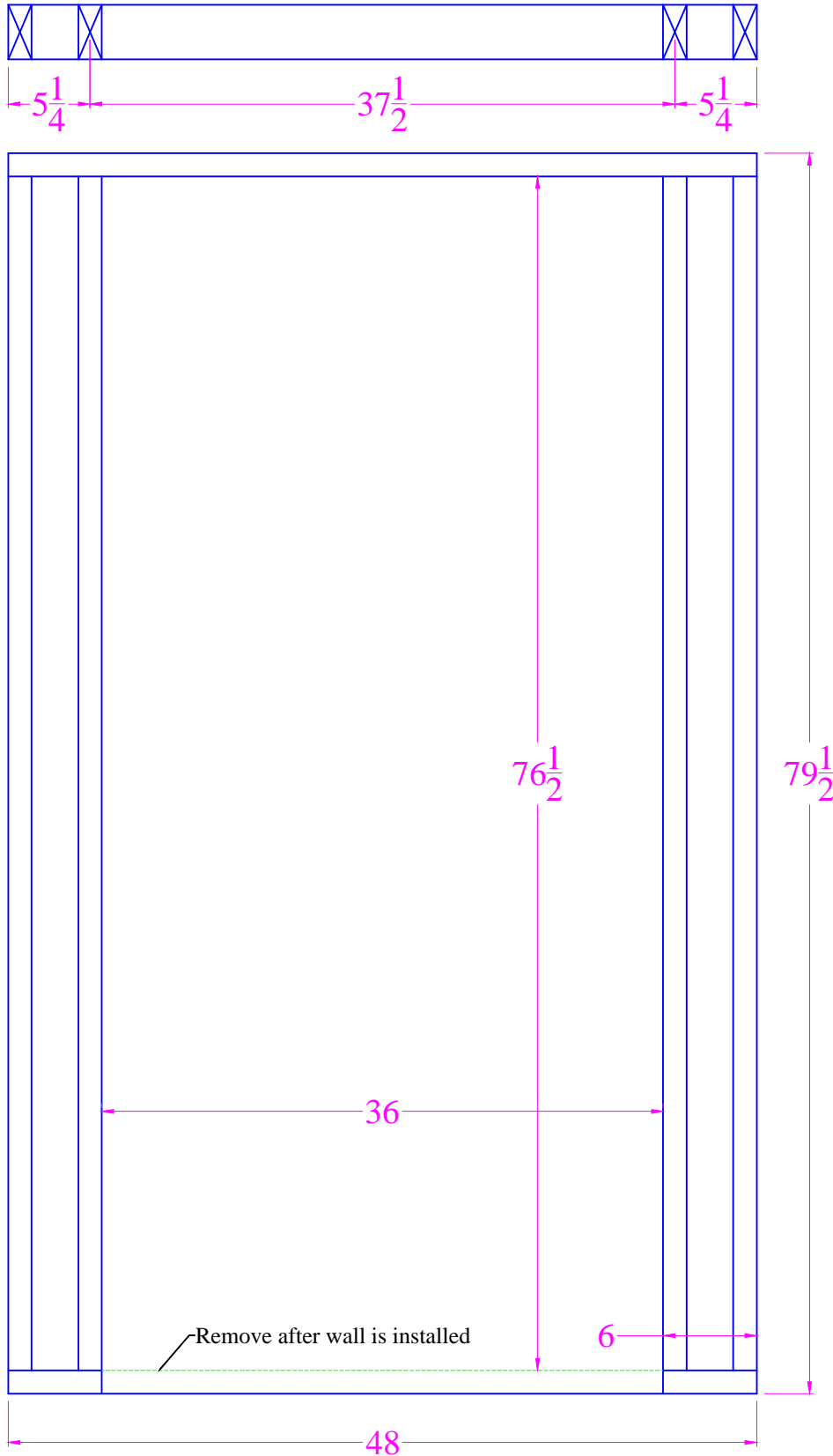
Drawn By: Dick Piersma

Date: 9-8-15

Door End

### Notes:

1. Wall framing is 2x4 DF.
2. Fasten using 16d sinkers or 3" plated deck screws.



## Garden / Storage Shed

4'x8' w/Gable Roof

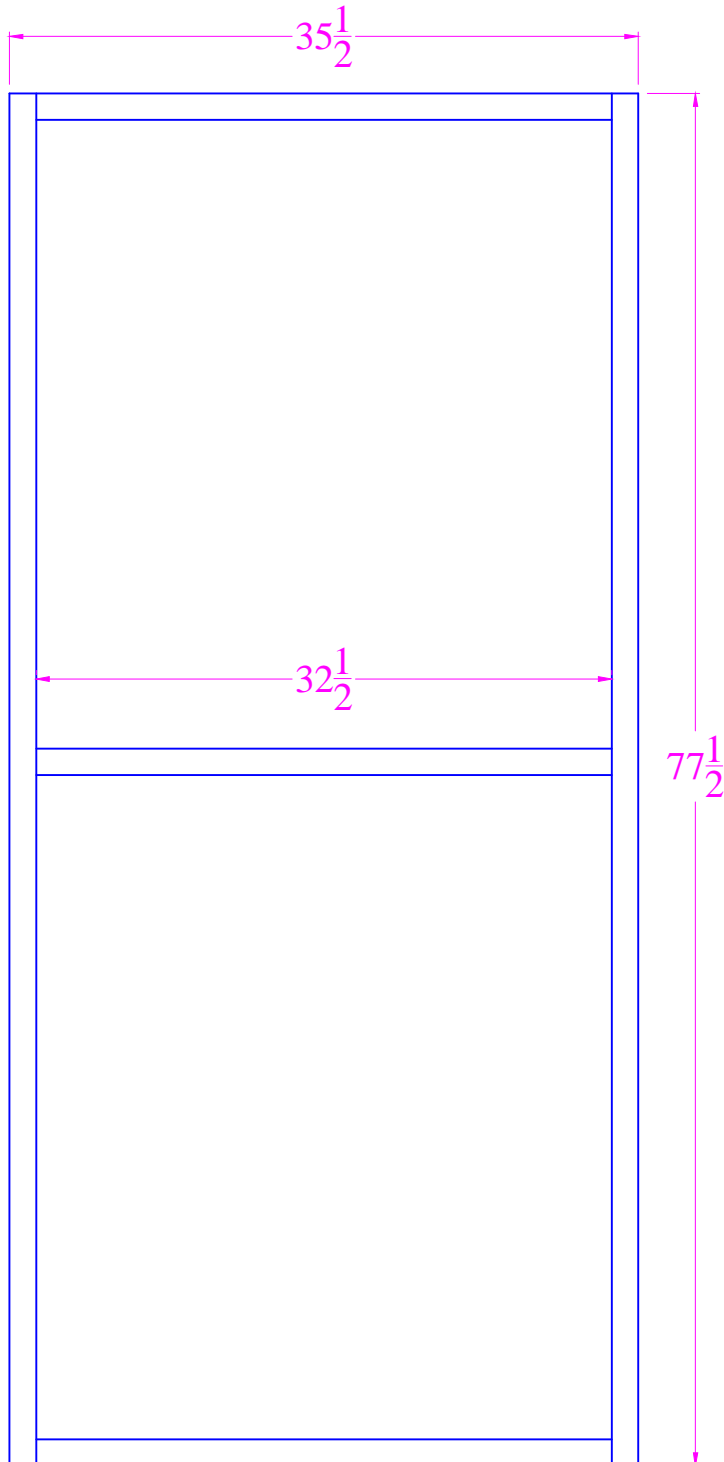
Drawn By: Dick Piersma

Date: 9-8-15

Door

### Notes:

1. Door framing is 2x4 DF.
2. Fasten using 16d sinkers or 3" plated deck screws.
3. Attach siding with 6d galvanized nails or 1-5/8" plated deck screws.
4. Nail/screw pattern = 8" centers around perimeter and 12" centers on the rest. Trim door with 1x4 DF.
5. Use 3 T hinges to hang the door.



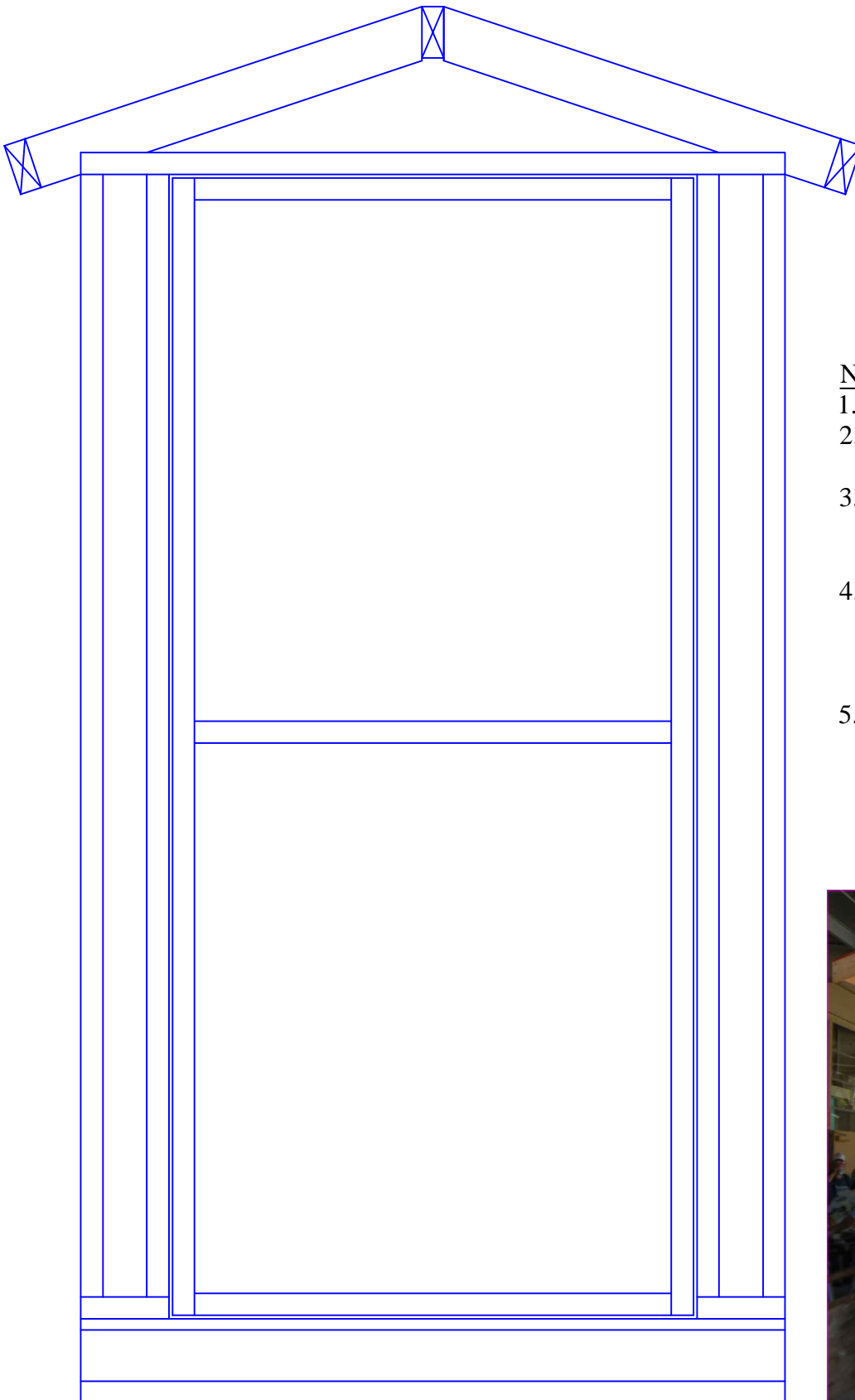
## Garden / Storage Shed

4'x8' w/Gable Roof

Drawn By: Dick Piersma

Date: 9-8-15

Door Frame - In Wall



### Notes:

1. Door framing is 2x4 DF.
2. Fasten using 16d sinkers or 3" plated deck screws.
3. Attach siding with 6d galvanized nails or 1-5/8" plated deck screws.
4. Nail/screw pattern = 8" centers around perimeter and 12" centers on the rest. Trim door with 1x4 DF.
5. Use 3 T hinges to hang the door.

